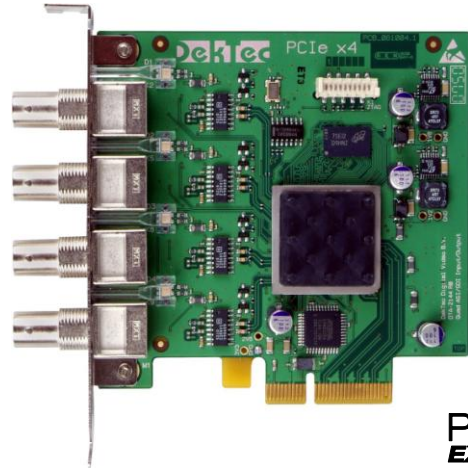


Quad ASI/SDI Adapter for PCI Express Bus

- ❑ Supports DVB-ASI and full-frame SDI
- ❑ Fully flexible port configuration
- ❑ PCI Express x4 for ample bandwidth

FEATURES

- Four BNC ports with individual status LEDs
- Operation in ASI or SDI mode can be selected under software control
- Each port can be independently configured as input or output
- Cable equalisation and inverted ASI
- Hardware counters for bitrate measurement and statistics
- Flexible receive modes with time-stamping, packet sequence counting and false-sync pass through for full TR 101 290 support
- 10-bit SDI, full stream @ 270 Mbit/s
- Lossless SDI Huffman encoding / decoding for reduction of bus bandwidth
- PCI Express x4 (Rev 1.1)
- Free drivers and SDK (DTAPI) for Linux, Windows XP/2k3/Vista and .NET
- Example source code for stream player and stream recorder



APPLICATIONS

- Transport-stream multiplexing
- Monitoring of multiple MPEG-2 transport streams and/or SDI serial digital video streams
- Universal ASI/SDI input/output adapter for PC-based applications that record, play and/or process ASI or SDI

KEY ATTRIBUTES

Parameter		Value
ASI/SDI connector		75-Ω BNC (4x)
Input return loss		>15dB
Hardware buffering		32MB/channel
ASI	Physical layer	DVB-ASI (coax) EN50083-9
	Rx or Tx bitrate	0 .. 214Mbit/s
	Resolution	<1bit/s
SDI	Physical layer	SMPTE 259M
	Bitrate	270Mbit/s
	#Bits	8 or 10bit
DVB ID		5551

RELATED PRODUCTS

Type	Description
DTA-124	Quad ASI/SDI inputs for PCI
DTA-2145	Dual ASI/SDI ports for PCIe

ORDERING INFORMATION

Type	Description
DTA-2144-SDP	Quad ASI/SDI I/O adapter for PCI Express with <i>DtGrabber+</i> , <i>DtTV</i> and <i>StreamXpress</i>
DTA-2144-SYP	DTA-2144-SDP with <i>SdEye</i>
DTA-2144-SXP	DTA-2144-SDP with <i>StreamXpert</i>
DTA-2144-SXY	DTA-2144-SDP with <i>SdEye</i> and <i>StreamXpert</i>