

ADV-7410ET-C



4 Composite inputs

ADV-7410ET-H



4 HDMI inputs

ADV-7410ET-S



4 HD/SD-SDI inputs

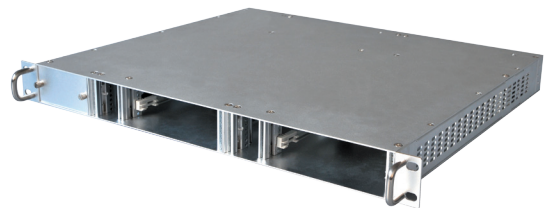
ADV-800MF Main Chassis

- Standard 4RU chassis with 8 slots for functional modules and 2 slots for Power Supplies
- Hot-backup dual power supply modules
- Intelligent cooling system with temperature sensor
- Wall mounted or Rack mounted
- Power Supply: AC 90V-250V, 150Watts, 50-60Hz
- Dimension: L=340mm, W=483mm, H=178mm (4RU)
- Operating temperature: 0 ~ 45°C(for all modules)
- Storage temperature: -10 ~ 60°C(for all modules)



ADV-200MF Main Chassis

- Standard 1RU chassis with 2 slots for functional modules
- 1 power supply module
- Intelligent cooling system with temperature sensor
- Wall mounted or Rack mounted
- Power Supply: AC 90V-250V, 150Watts, 50-60Hz
- Dimension: L=340mm, W=483mm, H=44.5mm (1U)



ADV-1000CU Programming Unit

- For setting parameters via front panel connector (Handset)
- 2×20 LCD display screen and 6-key keypad
- No external power nor battery needed
- Easy and quick on site system configuration without PC
- Dimension 170×70×22 mm



Specification

Video Input & compression Coding		DVB-ASI Input (Rear Panel)	
Video Input Interfaces	4xHDMI, 4xSDI, or 4xCVBS (note: see Ordering Information)	Input Interface	BNC Female, 75Ω
Coding Profile & Level	H.264/AVC BLP, MP, HP @ L4.0 or less, MPEG-2 MP@ML	Maximum Bit Rate	100 Mb/s
Sampling Format	4:2:0, 10-bit, YCbCr	Data Type	Byte
Compression Bit Rate	600K~20Mbps	Packet Length	188/204 Bytes
Video Resolution & Recommended Compression Bit Rate H.264	1080i (1920x1080) @25Hz, 29.97Hz, 30Hz, 50Hz, 59.94Hz, 60Hz: SMPTE274M: 1~20Mb/s	Signal Level	200~880mVp-p
	720p 1280x720) @25Hz, 29.97Hz, 30Hz: SMPTE296M: 1~20Mb/s	DVB-ASI Output (Rear Panel)	
	480i (720x480) @29.97Hz: SMPTE656M: 600K~10Mb/s	Output Interface	BNC Female, 75Ω
	576i (720x576) @25Hz: SMPTE656M: 600K~10Mb/s	Effective Bit Rate	120Mb/s
Video Resolution & Recommended Compression Bit Rate MPEG 2	480i (720x480) @29.97Hz: SMPTE656M: 3~10Mb/s	Data Type	Byte
	576i (720x576) @25Hz: SMPTE656M: 3~10Mb/s	Packet Length	188/204 Bytes
Video Resolution Down Scaling	Vertical & Horizontal adjustable respectively (frame rate is not scalable)	Signal Level	800±80mV
Aspect Ratio	4:3, 16:9 Selectable	TS/IP Gigabit Ethernet (Front Panel)	
Audio Input & Compression Coding		Standard	IEEE 802.3, 10/100/1000 Base-T
Audio Input Interfaces	HDMI/SDI Embedded or Analog (note: see Ordering Information)	Maximum Effective Bit Rate	80Mb/s (note: Full Duplex mode) , 200Mb/s (note: Multiple Output mode)
Coding Standard	MPEG1 Layer II	Encapsulation	SPTS or MPTS
	MPEG-2/4 AAC-LC/HE-AAC(V1, V2)	Protocol	UDP, RTP, ICMP, ARP, IGMPv2
Sampling Rate	48KHz	Video inputs hardware options (Rear Panel)	
Recommended Compression Bit Rate	MPEG1 Layer II :32~192Kbps(mono), 64~384Kbps(stereo), MPEG-2/4 AAC-LC :24~256Kbps(mono), 48~512Kbps(stereo), MPEG2/4 HE-AAC(V1, V2) : 16~128Kbps(mono), 32~256Kbps(stereo)	SDI In with embedded audio	4xBNC Female, 75Ω (ADV-7410ET-S)
Transcoding		HDMI In with embedded audio	4xHDMI Sockets (ADV-7410ET-H)
Transcoding Mode	H.264 to MPEG-2, H.264 to H.264, MPEG-2 to MPEG-2, MPEG-2 to H.264 MPTS, MPEG2 MP@ML MP@HL, MP@HL	CVBS In & Analog Audio In	2xD-Sub15 (with D-Sub 15 to BNC female adapter cablings, total 4 sets of inputs, supplied by AdvancedDigital)
Input Standard	MPTS, H.264/AVC Main/High/Baseline Profile @ L4.0 or less (but not FMO, ASO & RS of Baseline)	Front Panel	
Output Standard	MPTS and/or un-stuffed TS, MPEG2 MP@ML	Control	1xRJ-45, 10/100 Base-T
	MPTS and/or un-stuffed TS, H.264/AVC Main/High/Baseline Profile @ L4.0 or less (but not include FMO, ASO & RS of Baseline)	TS/IP	1xRJ-45, 10/100/1000 Base-T
		LED	1xPower, 4x Encoder Status, 1x ASI/IP Status
		IP Reset	Press for 5 second or more to return the default IP address of control port
		Reset	Local reset
		Others	
		Power	DC 3.3V/5V/12V, from ADV-800MF or ADV-200MF
		Operating Temperature	0~40°C
		Storage Temperature	-10~60°C
		Operating Humidity	10~90% (Non-condensed)

ORDERING INFORMATION

- ADV-7410ET-C - 4-channel H.264/MPEG-2 SD Encoder/Transcoder with 4 Composite (CVBS) inputs
- ADV-7410ET-S - 4-channel H.264/MPEG-2 HD/SD Encoder/Transcoder with 4 HD/SD-SDI inputs
- ADV-7410ET-H - 4-channel H.264/MPEG-2 HD/SD Encoder/Transcoder with 4 HDMI inputs

ACCESSORIES

- ADV-800MF - 4RU Chassis with dual Power Supply, holds up to 8 modules ADV-7410ET
- ADV-200MF - 1RU Chassis with Power Supply, hold up to 2 modules ADV-7410ET
- ADV-1000CU - Programming unit for settings parameters via front panel connector (Handset)